



WORLD'S BEST
ALLOY BULLBARS

East Coast Bullbars (ECB Pty Ltd)

Tel: 07 3897 5700

Fax: 07 3283 1168

ecb@ecb.com.au www.ecb.com.au

29 Snook St
Clontarf QLD 4019
Australia

Po Box 122
Margate QLD 4019
Australia

EAH70SY

REPLACES: 26.02.13
REVISED: 01.05.15

FITTING INSTRUCTIONS

HOLDEN COLORADO RG 6-12 ON ARC WINCH PROTECTION BAR WITH FOG LIGHTS VEHICLE FRONTAL PROTECTION SYSTEM (VFPS) FOR AIR BAG & ADR COMPLIANT VEHICLES

Check installation hardware before commencing.

Caution: These vehicles are known for running at high temperatures when driven under fully laden conditions (at close to maximum weight of vehicle and trailer combined). **Care needs to be taken when cutting air dams to remove as little as possible around ECB steel mounts.**

1. Lift bonnet
2. Remove two T20 torx head screws from the guard liner per side and unplug fog lights.
3. Remove two 10mm head bolts from the top of the bumper next to the headlights, eight T20 torx head screws from the top of grille, and five 10mm head bolts from under side of bumper. Pull outer edge of bumper outwards to unclip from guard and under headlight each side. Remove front bumper.
4. From under vehicle, remove five 15mm head bolts from front section of under body guard. Remove unbolted section only.
5. Remove front bumper support, four 15mm head bolts from end of chassis.
6. Mark and cut left and right air scoop. **See figures 1 and 2. Caution: leave as much of this air dam in place as possible as cooling system of vehicle when driven under fully laden conditions (at close to maximum weight of vehicle and trailer combined), may be affected.**
7. Mark and cut left & right bumper retainers. **See figure 3.** Drill two pop rivets out of rear of retainer and remove. **Note: Blow filings clear and treat all exposed metal with a rust inhibitor.**
8. Align ECB guard infill (supplied) with side of guard. Fit guard liner into slot at rear of infill. Using the infill as a guide mark and drill two 6 mm holes on outer under edge of front guard. **Note: Blow filings clear and treat all exposed metal with a rust inhibitor.** Install using two M6x20 bolts, washers and nyloc nuts (supplied). Secure liner to infill using speed clips and original screws from the bumper underside. Care must be taken when fitting infill on guard to ensure correct positioning so infill will not rub on protection bar. **See figure 4.**
9. Mark and cut inner guards. **See figures 5 and 6.**
10. Using a die grinder or similar, enlarge front hole in the outside of rail large enough to fit 44mm spacer tube. Slide spacer tube into chassis rail ready for the mount. **Note: Blow filings clear and treat all exposed metal with a rust inhibitor. See figure 7.**
11. Fit ECB winch frame (supplied) onto chassis rails using original 15mm head bolts from front of chassis, two M12 x 75 bolts, flat washers, spring washers and nuts and two M12 x 40 bolts, flat washers, spring washers and nuts (supplied). Align centrally on vehicle and tighten.
12. Install winch fairlead to front of winch frame using bolts supplied with winch.



**WORLD'S BEST
ALLOY BULLBARS**

East Coast Bullbars (ECB Pty Ltd)

Tel: 07 3897 5700

Fax: 07 3283 1168

ecb@ecb.com.au www.ecb.com.au

29 Snook St
Clontarf QLD 4019
Australia

Po Box 122
Margate QLD 4019
Australia

13. Fit winch into cradle with clutch on passenger side using bolts supplied with winch. Fit control box (supplied) to winch motor using two worm drive hose clamps (for warn winches), attach control box plates to end of winch cross bars (for Mean Mother winches). **See figure 8.**
14. Mark and cut bumper across vents under headlights and through grille. **See figure 9.**
15. Disconnect indicator and parking lights on vehicle. Install ECB quick click wiring harnesses (supplied) between disconnected harness and indicator / park lights on vehicle. Run wiring out from under lights ensuring clearance from sharp edges and moving parts.
16. Connect ECB Quick Click fog light wiring harness (supplied) into original wiring harness.
17. Refit bumper as per reverse of step 2.
18. Fit ECB LED indicator / park lights into protection bar as per instructions supplied with the LED indicator kit. **NOTE: Ensure park light is to outside. See figure 10.**
19. Attach ECB fog lights to protection bar. Place M6 x 20 bolts, spring washers (supplied) through light mount from inside and attach nut to top. Slide assembly into light mount in Protection bar and centralize light to hole. **TIGHTEN FIRM ONLY. See figure 11.**
20. Attach 6mm clip lock trim (supplied) to top of ECB protection bar and winch opening in skirt. **NOTE: Trim off lower edge on an angle so trim will sit flush with end of protection bar. See figures 12, 13 and 14.**
21. Install ECB protection bar onto ECB winch frame using M12 x 40 bolts, flat washers, spring washers and nuts (supplied). For Driver side bottom hole, a nut and washer on wire is provided. **Finger tighten only.**
22. Align ECB protection bar to vehicle. Tighten all bolts. **See figure 15 and 16.**
23. Connect ECB indicator / park lights and fog lights.
24. Check operation of ECB indicator / park lights, ECB fog lights.
25. Ensure skirt vents are fitted with ECB marking to bottom (upside down), to allow maximum cooling to radiators.
26. Remove 14mm head bolt from front of stabilizer bar next to tow hook. Slide ECB under body guard on top of stabilizer bar. Align ECB under body guard and refit 14mm head bolt. **Tighten all bolts. See figure 17.**
27. Refit original equipment under body guard.

ENSURE NUMBER PLATE IS CLEARLY VISABLE

Note: When fitting/refitting the licence plate to the vehicle, ensure there is no obstruction to licence plate vision in accordance with local authorities. If required relocate licence plate to an alternate location.

Further VFPS Notes:

- a) Do not attach VFPS to the vehicle using anchorages not intended for this purpose (e.g. engine mounting bolts).
- b) Do not use this product for any vehicle make or model, other than those specified by the VFPS manufacturer.
- c) Do not remove the plaque or label from the VFPS.
- d) Do not modify the structure of the VFPS in any way.
- e) No accessory or fitment should project forward of the VFPS forward profile.
- f) **ENSURE THESE INSTRUCTIONS ARE LEFT WITH VEHICLE OWNER AND/OR OPERATOR.**

IMPORTANT INFORMATION

Periodically check bolts and nuts for correct tightness, especially if travelling on rough roads



FITTING KIT

1 – ECB Winch Frame	2 – M10 spring washers
1 – Pair ECB Guard infills – IN KIT	2 – M10 x 1.25 nuts
1 – Pair ECB under body guards	1 – M12 nut and washer on 200mm wire
1 – Warn winch control bracket (WIN_CONT_B4MS) – IN KIT	10 – M6 x 20 bolts
1 – Mean Mother winch bracket (MOTHERCB_B4MS) – IN KIT	16- M6 flat washers
2 – 15nb tube spacers, 44mm long	8- M6 nyloc nuts
2 – 100mm worm drive hose clamps	2 – M6 spring washers
12 – M12 x 1.75 x40 bolts	2 – M6 nuts
2 – M12 x 1.75 x 75 bolts	1 – ECB indicator / park kit
24 – M12 flat washers	1 – ECB indicator / park harness kit (IC12COLECB100H)
12 – M12 spring washers	1 – ECB fog light kit
11 – M12 x 1.75 nuts	4 – fog light surrounds
1 – M12 x 1.75 nut and washer on 200mm wire	1 – ECB fog light harness kit (IC12COL1004ECBH)
2 – M10 x 1.25 x 30 bolts	1 – 2350 mm length 6mm clip lock trim
4 – M10 flat washers	1 – 750 mm length 6mm clip lock trim



Figure 1: Trim area on passengers side of vehicle. Drivers side is an identical cut.

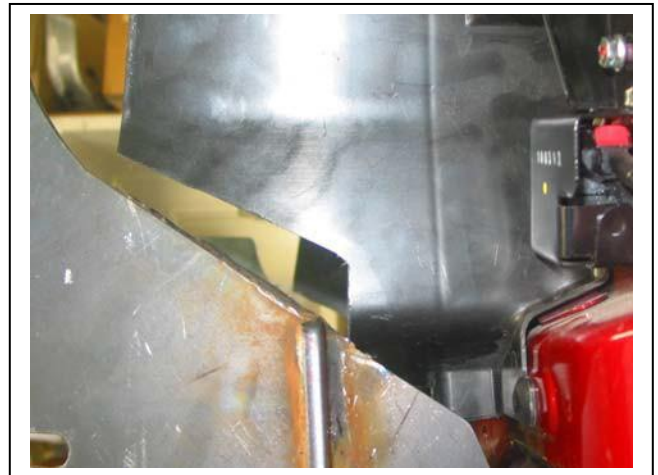


Figure 2: Trimmed area as seen behind mount
Caution: trim as little as possible.



Figure 3: Trim lower bumper keeper to front corner of guard



Figure 4: Correct fitment of infill to guard on passenger side .



Figure 5: Driver side inner guard trim line.



Figure 5: Passengers side inner guard trim line.

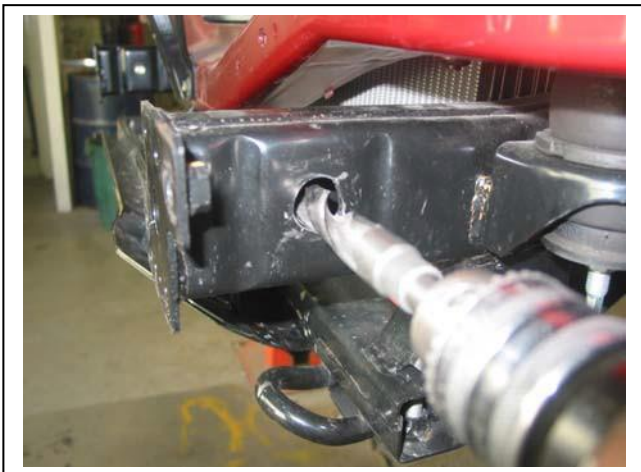


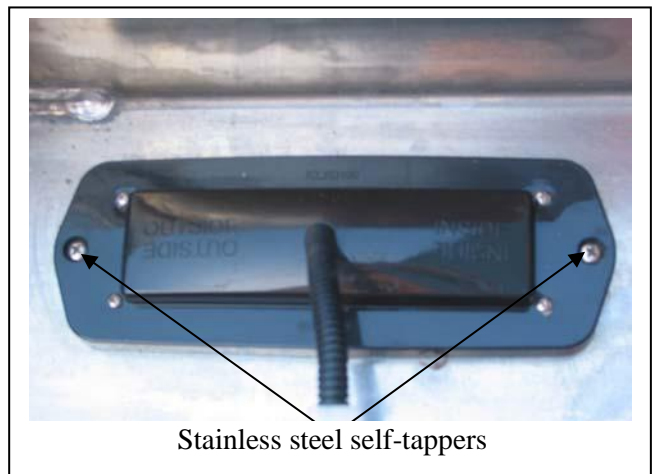
Figure 6: Enlarge front hole in outside of chassis rail.



Figure 7: Install winch in winch frame as per manufacturers instructions



Figure 8: Bumper cut line



Stainless steel self-tappers

Figure 9



East Coast Bullbars (ECB Pty Ltd)

Tel: 07 3897 5700

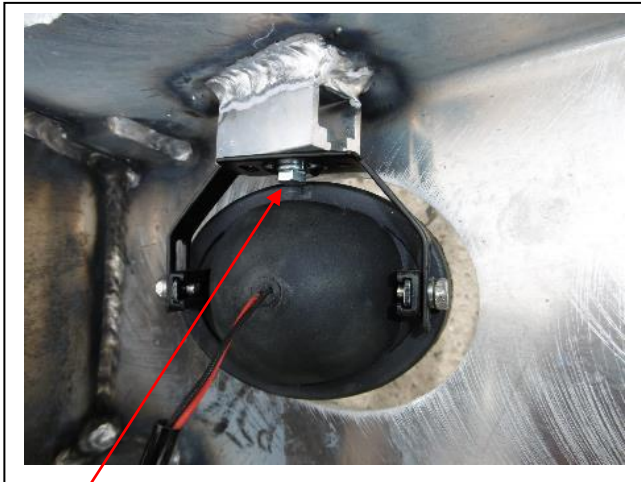
Fax: 07 3283 1168

ecb@ecb.com.au www.ecb.com.au

29 Snook St
Clontarf QLD 4019
Australia

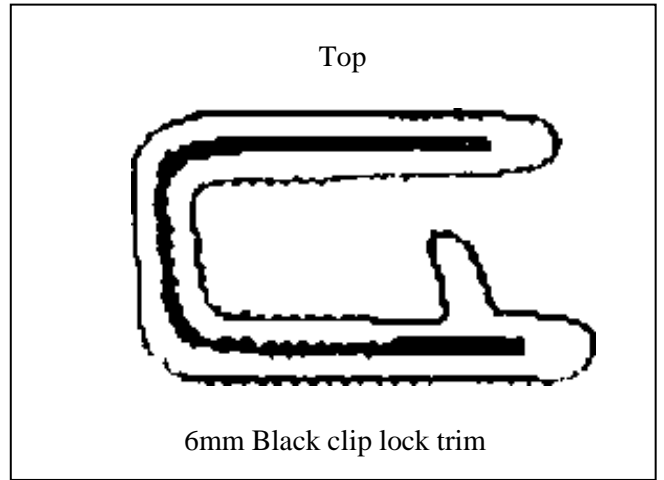
Po Box 122
Margate QLD 4019
Australia

WORLD'S BEST
ALLOY BULLBARS



M6 Bolt

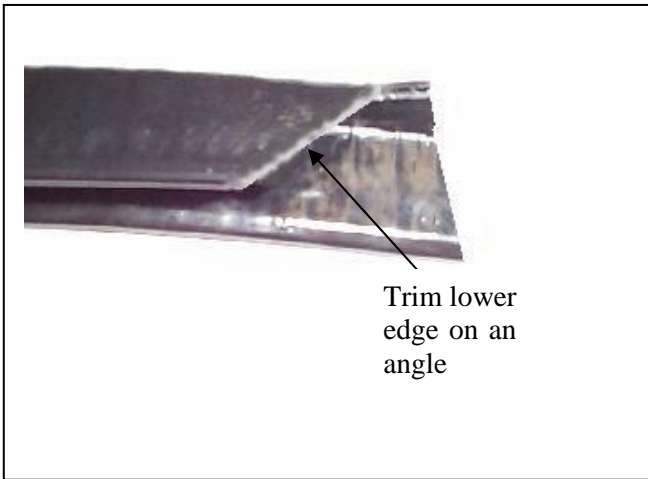
Figure 10



Top

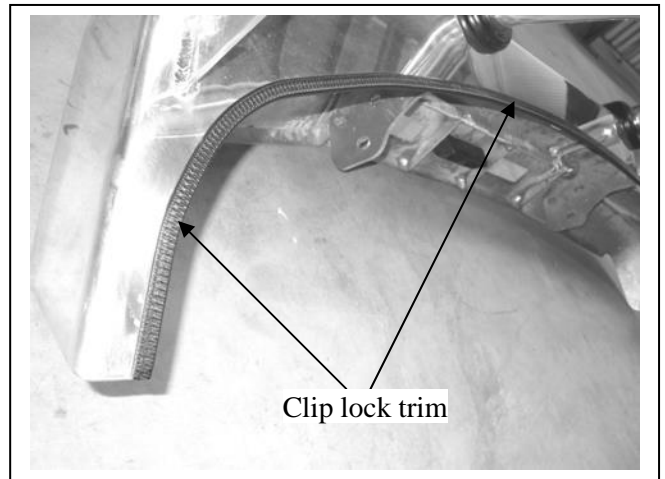
6mm Black clip lock trim

Figure 11



Trim lower
edge on an
angle

Figure 12



Clip lock trim

Figure 13



Figure 14



Figure 15



**WORLD'S BEST
ALLOY BULLBARS**

East Coast Bullbars (ECB Pty Ltd)

Tel: 07 3897 5700

Fax: 07 3283 1168

ecb@ecb.com.au www.ecb.com.au

29 Snook St
Clontarf QLD 4019
Australia

Po Box 122
Margate QLD 4019
Australia

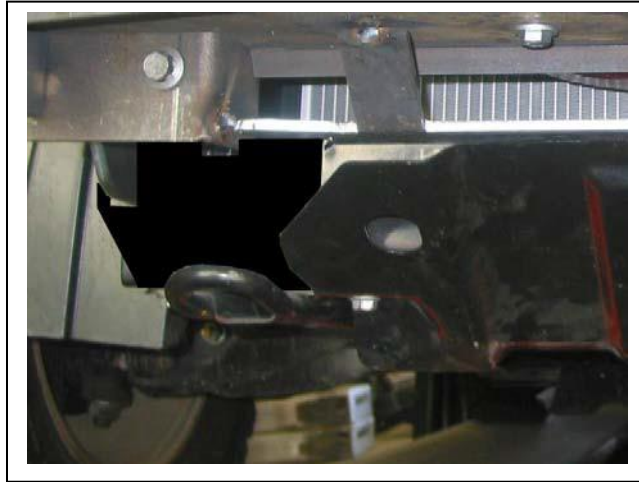


Figure 16



**WORLD'S BEST
ALLOY BULLBARS**

East Coast Bullbars (ECB Pty Ltd)

Tel: 07 3897 5700

Fax: 07 3283 1168

ecb@ecb.com.au www.ecb.com.au

29 Snook St
Clontarf QLD 4019
Australia

Po Box 122
Margate QLD 4019
Australia

We value your comments

Dear Fitter,

ECB would like to know how you went with the installation of this product. We value your comment and may need to contact you to clarify some details so please complete your contact details clearly.

We would appreciate if you could complete as many of the following details as possible.

Your Name:	Your contact No.
Product Part No.	Product Invoice No.
Product Description:	Make, model, and year of vehicle:
Product Work Order No.	Company your from/Company product purchased from:

Date of Fitment: ___/___/___

Was the fitting hardware supplied complete? Yes No

If no what was not supplied

Did the installation go well? Yes No

Please provide comments

Please draw diagrams if you need to.

Post to
Reply Paid 122
PO Box 122
Margate QLD 4019

Fax to
(07) 3283 1168



**WORLD'S BEST
ALLOY BULLBARS**

East Coast Bullbars (ECB Pty Ltd)

Tel: 07 3897 5700

Fax: 07 3283 1168

ecb@ecb.com.au www.ecb.com.au

29 Snook St
Clontarf QLD 4019
Australia

Po Box 122
Margate QLD 4019
Australia



WORLD'S BEST
ALLOY BULLBARS

East Coast Bullbars (ECB Pty Ltd)

Tel: 07 3897 5700

Fax: 07 3283 1168

ecb@ecb.com.au www.ecb.com.au

29 Snook St
Clontarf QLD 4019
Australia

Po Box 122
Margate QLD 4019
Australia

DESPATCH CHECKLIST EAH70SY

Work Order #	
Finish:	
Transport:	
Due Date:	

OC.....1 – Steel winch bracket.

BK.....1 – Pair alloy guard infills (P/C Black) – **IN KIT**

OC.....1 – Pair ECB under body guards (EAH70SY_U3AL)

BK.....1 – Warn control box bracket (WIN_CONT+B4MS) – **IN KIT**

BK.....1 – Mean Mother winch bracket (MOTHERCB_B4MS) – **IN KIT**

BK.....1 – Bolt Kit

BK.....1 – Quick Click Indi / Park kit (IC12COLECB100H)

BK.....1 – LED ECB indicator / park light kit

BK.....1 – ECB fog light kit

BK.....1 – Quick Click fog wiring kit (IC12COL1004ECBH)

BK.....4 – Fog light surrounds

BK.....1 – 2350mm length 6mm clip lock

BK.....2 – 750mm length 6mm clip lock trim

OC.....2 – ECB Overrides – **Fitted to Bar**

OC.....8 – 6mm Air Vents – **Fitted to Bar. Trim rear of top 4 flat and clean up**

**See other side of
this page for
photos of all
mounts**



Is this product “the best it can be” Yes _____ / _____
Wrapper’s initials / Checker initials

If **NO** fix before continuing

All parts checked and completed by:

Nut and bolts: _____ Date __/__/__

Order control: _____ Date __/__/__

Final wrap check: _____ Date __/__/__



East Coast Bullbars (ECB Pty Ltd)

Tel: 07 3897 5700

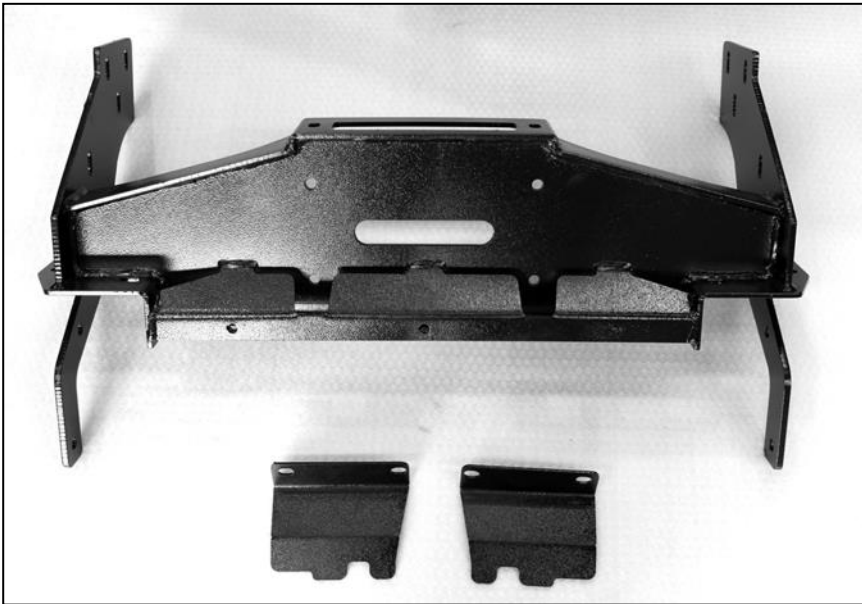
Fax: 07 3283 1168

ecb@ecb.com.au www.ecb.com.au

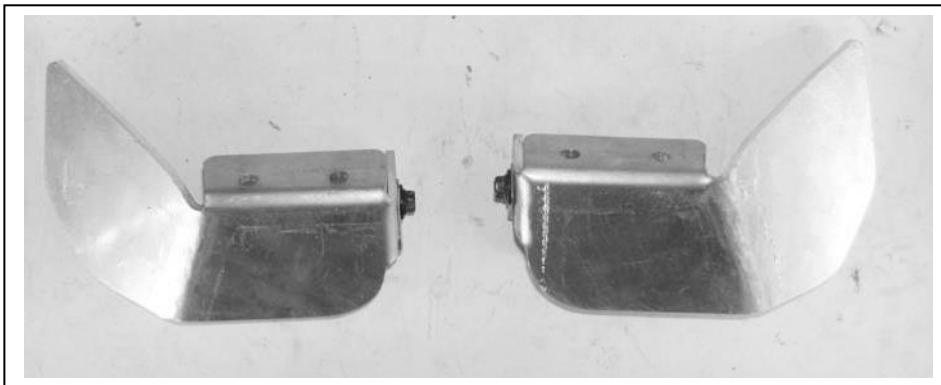
WORLD'S BEST
ALLOY BULLBARS

29 Snook St
Clontarf QLD 4019
Australia

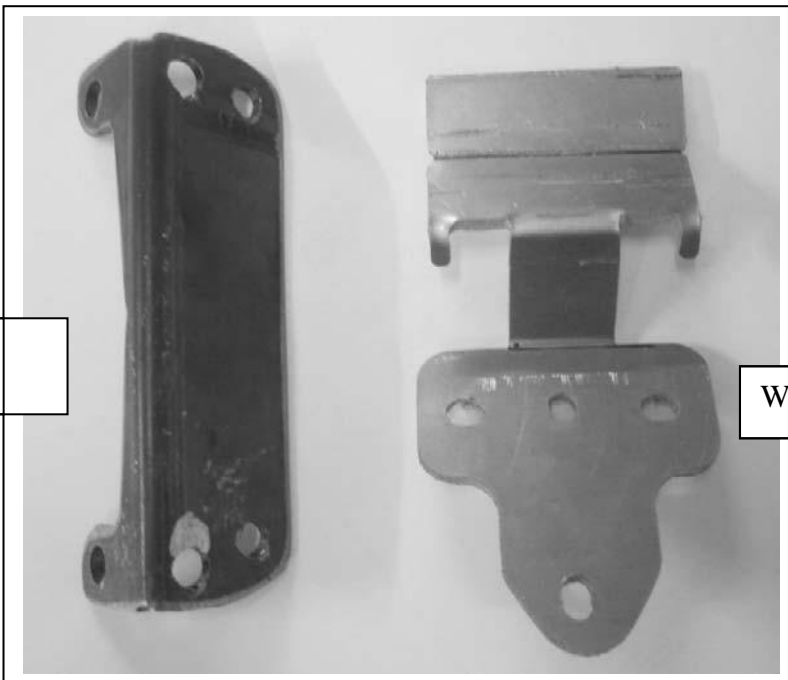
Po Box 122
Margate QLD 4019
Australia



WINCH MOUNT
& BASH PLATES



Pair alloy guard infills (P/C
Black)



Mean Mother winch
bracket

Warn winch bracket

Wrappers initials / Checkers initials